

Product:	FIBAROLL	PDS No. 73(f)
Aspect:	APPLICATION FOR INSULATION PROTECTION	
Area:	TERMINATIONS	Page 1 of 1

Terminations from the insulation are very important. A poor termination can let the rain into an insulation system and potentially cause damage. If FibaRoll is required to terminate onto concrete from an insulation system (i.e. the concrete plinths at the base of storage tanks) then the concrete must have a moisture content of a less than 5%, have the correct surface preparation (i.e. needle gun or similar to remove the fines and laitance at the surface) and then a primer coat of FibaGel. Where terminating onto hot pipe that is above the maximum service temperature of FibaRoll, thermal separation is achieved with a steel stand-off and woven glass mat or rope.



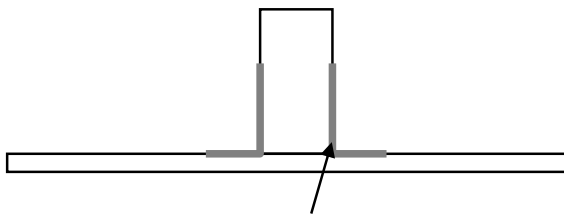
FibaRoll covering an anchor bolt box and terminating onto concrete utilising FibaGel as a primer



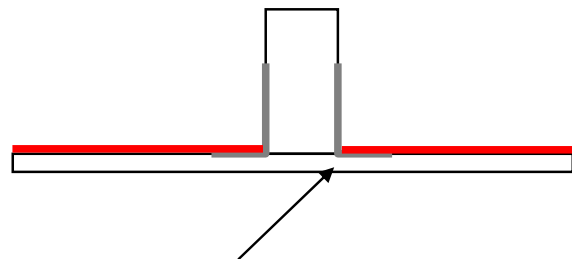
FibaRoll terminating onto an import pipe on a storage tank roof.



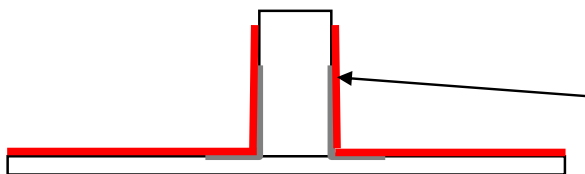
FibaRoll terminating and closing around a product pipe on the roof of a storage tank.



An example of a termination on a steel pipe coming through insulation. The first piece of FibaRoll is bonded to the steel (newly painted piping must be lightly abraded first prior to a FibaGel primer application). This is circumferentially wrapped and overlapped onto itself to fully close the seam.



A second pieces / pieces's of FibaRoll are then applied onto the first piece.



A third piece is circumfrenially wrapped and bonded onto the steel pipe thus closing the seam giving a very strong termination.

AUSTRALASIAN INSULATION SUPPLIES PTY LTD	PRODUCT INFORMATION SHEET	REVISION: original
		DATE OF ISSUE: Nov 06
		CHKD: BH APPV: IRS