

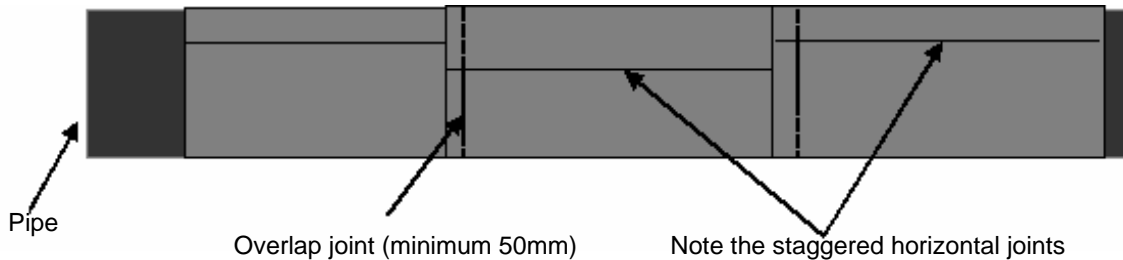
Product:	FIBAROLL	PDS No. 73(c)
Aspect:	APPLICATION FOR INSULATION PROTECTION	
Area:	STRAIGHT PIPING	Page 1 of 2

For insulation protection purposes on piping FibaRoll is normally applied in a “cigarette wrap” type installation. The joints can be overlapped or achieved using a 100 mm strip joint which involves butting the two edges together over the top of a pre-applied strip.

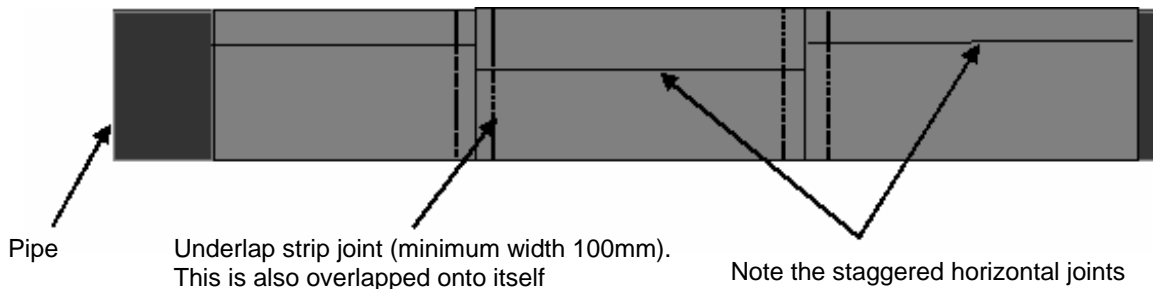
The application starts at either 2 to 3 o'clock on the pipe / ducting and continues underneath the pipe / ducting stripping the bottom film as the application progresses. Air can be smoothed out by using a cloth to smooth the FibaRoll onto the surface. The top film is kept in place apart from the area of any overlap. The horizontal overlap points downwards so that water does not run into the joint. Hand pressure with a cloth or a hand roller **must** be used to consolidate the material at the overlap.

The vertical overlap to the next sheet is achieved by first peeling back the top film from the area of the overlap only with knife or scissors. Then the new sheet is applied over the revealed area, the peeled film is brought back over the joint and pressure is applied to the joint by using a roller. It is sensible to stagger the horizontal joints where possible.

STRAIGHT SECTION WITH OVERLAP JOINT



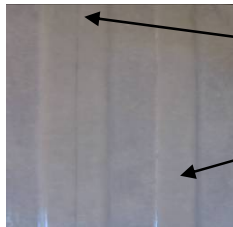
JOINT USING 100mm STRIP UNDER BUTT JOINT



AUSTRALASIAN INSULATION SUPPLIES PTY LTD	PRODUCT INFORMATION SHEET	REVISION: original
		DATE OF ISSUE: Nov 06
		CHKD: BH APPV: IRS

Product:	FIBAROLL	PDS No. 73(c)
Aspect:	APPLICATION FOR INSULATION PROTECTION	
Area:	STRAIGHT PIPING	Page 2 of 2

The under-lap strip is placed at appropriate distances along the pipe so that the sheets of FibaRoll meet on top of the strips and are butted together. The underlap strips are overlapped themselves and the top film removed. The strongest FibaRoll joint is ‘wet’ FibaRoll onto ‘wet’ FibaRoll. If a strip cures and the top film was removed then this rough surface is an adequate surface to apply more FibaRoll onto without further surface preparation. Each joint and seam must be rolled down to ensure that it is closed.



An example of an underlap strip with a butt joint on top.
An example of an overlap joint



FibaRoll applied to pipe showing overlap joints and water-shedding edges.

Even lobster-back bends are fully sealed by the chemical bonding of FibaRoll

All of the most vulnerable locations in the pipe rack are water impervious; all fittings, bends and junctions, penetrations and terminations.



Application Schedule

- (a). Insulation preparation – including full inspection for damage, damp and low density areas.
- (b). FibaRoll wrap or sheet application – wrapping with a little tension or smoothing down with a cloth or roller and the FibaRoll seam rolled down.
- (c). FibaRoll curing period.
- (d). Inspection of the application with a FibaGel application onto the seams and areas of termination if required.