



ROCKWOOL® COMMUNIQUE

No. 502

March 2004

CERTIFIED FIRE PROTECTION FOR INSULATION CONTRACTORS

Stone wool insulation, with its high melt temperature ($\geq 1100^{\circ}\text{C}$) is ideally suited to a wide range of fire protection applications. Rockwool® Group has a number of fully certified systems for use in mechanical services, shipping, oil and gas and general construction. This edition of Rockwool® Communiqué is devoted to looking at some of these systems.

Mechanical Services

Conlit is a high density fire protection grade stone wool board which is tested and certified for use as a fire rating treatment for air-conditioning ductwork. It is simply applied to the external surface of the duct in accordance with one of several certified fixing methods to achieve ½, 1, 1½, or 2 hours fire resistance for fire break-in or fire break-out. Fire protection applied in this way makes this work a logical extension to the scope of the insulation contractor with the added benefit of removing a trade from the construction site. Unlike site sprayed treatments, the application of Conlit is not disruptive at the site and can be completed under the same conditions as the general insulation work. Conlit is made from the new age fibres which meet the EU requirements for bio-solubility.

Conlit can be applied in various ways. Figure 1 shows the product being secured with weld pins and clips on three faces of the duct with longitudinal butt-joints secured with spiral fasteners at 250mm centres. Transverse joints can be glued with the special Conlit Adhesive or mechanically joined with cover strips and fasteners. Flanges are treated with "T" pieces or cover strips in a selection of certified methods. Unlike many ductwork treatments, Conlit does not need further insulation to achieve 120/120/120 resistance. The product also provides a simple solution to the problem of treating circular or oval ductwork (see Figure 2)

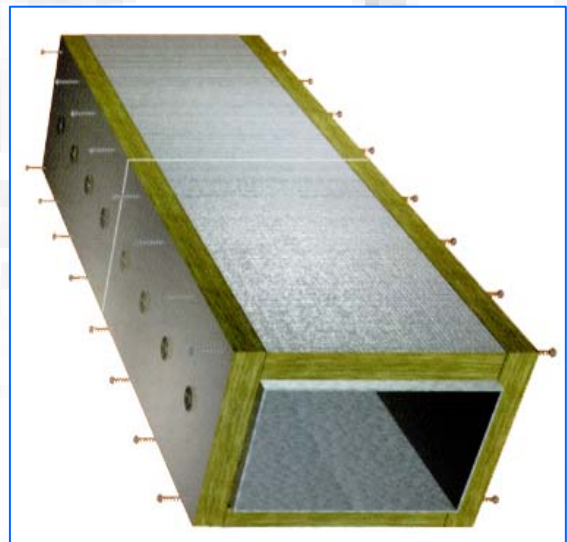


Figure 1

Benefits of Conlit System

- *Fast simple and cost effective treatment.*
- *Can be applied at the site or in the workshop.*
- *Can eliminate a trade at the construction site.*
- *Fully certified supported by BRANZ Assessment*
- *Weights less than 1/3 the weight of traditional site sprayed products.*
- *Single layer system is easy to validate.*
- *Provides 120/120/120 resistance without the need for further insulation treatment.*
- *Can be installed by any competent insulation contractor.*

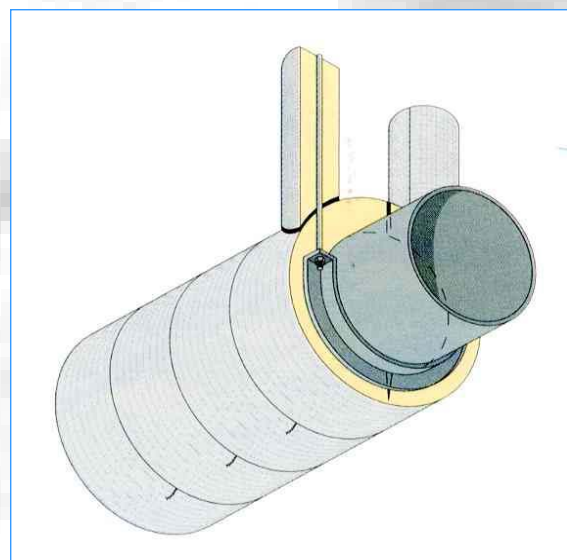


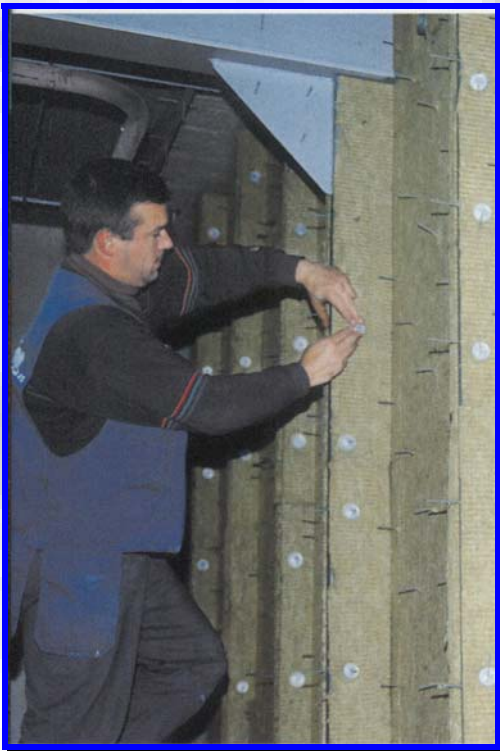
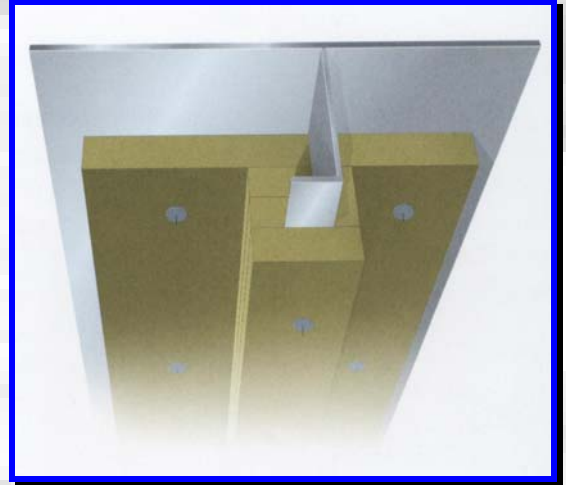
Figure 2

Marine Applications

AIS have recently committed to stocking a range of Rockwool® Group products that are fully certified for use in fire protection applications for ship building and general marine work. In the past, marine work with rockwool in Australia was made more difficult by a lack of current and complete certification and lack of stock of standard items required for this work. Having recently acquired the most up to date certification, we can now provide a more complete service for marine contractors. Full drawings and certificates are available for the following installations:

Structure	Fire Resistance		Product
Steel Deck	A30	✓	Marine Slab 758
		✓	Wired Mat 158
Steel Bulkhead	A60	✓	Marine Slab 758
		✓	Wired Mat 158
	A30	✓	Marine Slab 758
	A60	✓	Wired Mat 158
Aluminium Deck	A60		Marine Slab 130
Aluminium Bulkhead	A60		Marine Slab 130

(✓ = stocked)



Installation details for deck and bulkhead fire protection

For further information on Conlit and Rockwool® Group Marine products contact:



AUSTRALASIAN INSULATION SUPPLIES PTY LTD

56 CUTLER ROAD, JANDAKOT, WA 6164

A.B.N. 25 612 643 993

A.C.N: 0006 912 885

TELEPHONE: (08) 9417 9494

FACSIMILE: (08) 9417 9595

Email: sales@ais-group.com.au

website: www.ais-group.com.au